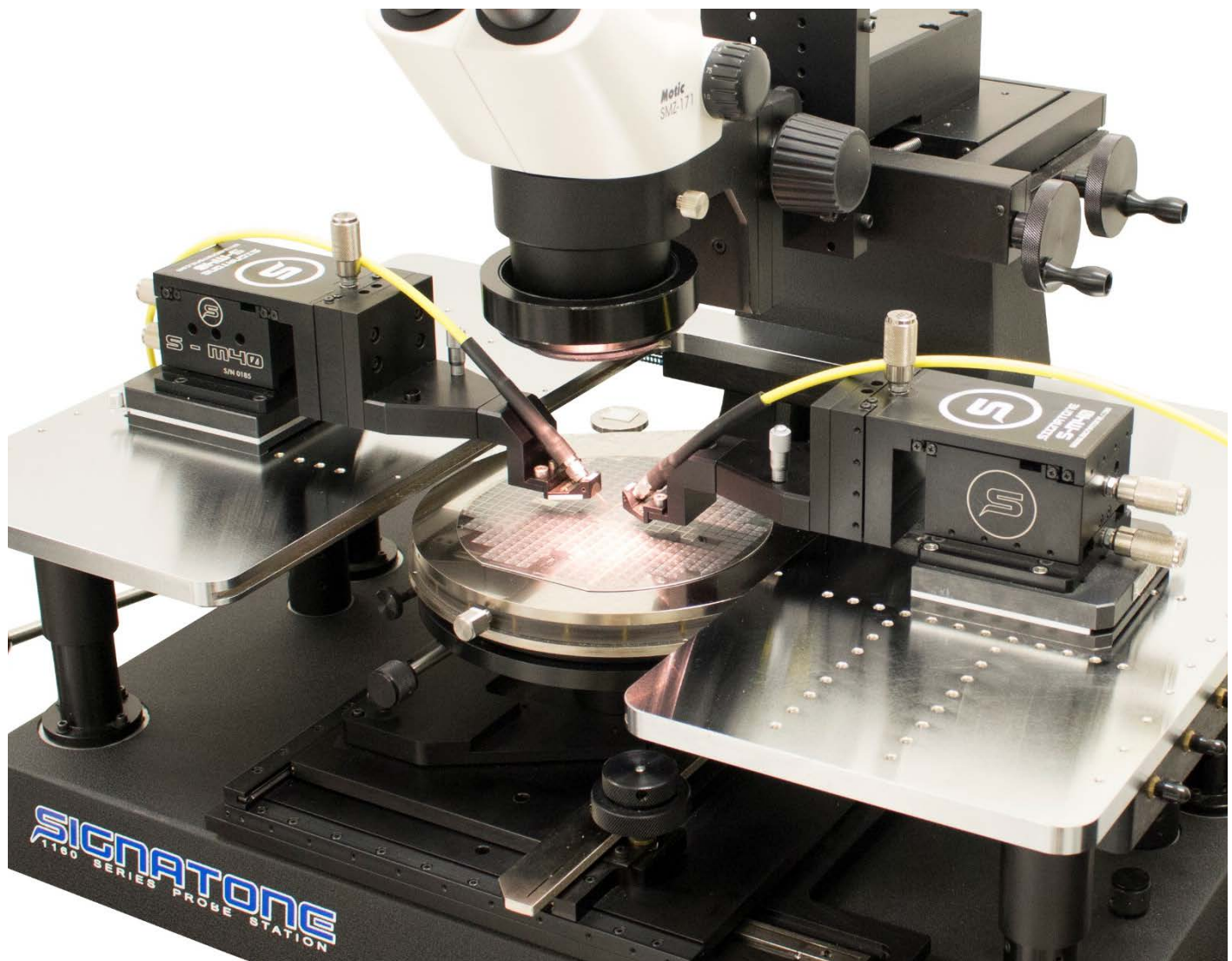


Signatone S-M40 Stable, In-Line RF Micropositioner



❖ FEATURES / APPLICATIONS

Signatone offers an extensive line of Micropositioners to address virtually every probing and measurement application, ranging from the very simple to the highly complex sub-micron high-resolution positioners.

The S-M40 stable 4-axis In-Line Micropositioner For RF probe heads, High power probe heads, 4-point resistivity probe heads, Wedge cards, glass slides for material handling and a variety of other uses.

The smooth motion of the X-Y & Z knobs along with the micrometer driven planarization knob makes the S-M40 one of the most popular positioners in the RF and High-power probing markets.

Designed for a Variety of Probing Applications

- RF DC-110 GHz
- High Power Test
- Resistivity Measurements
- Wedge Card Probing
- Material Transfer
- MEMS Test
- Your Application

SPECIFICATIONS

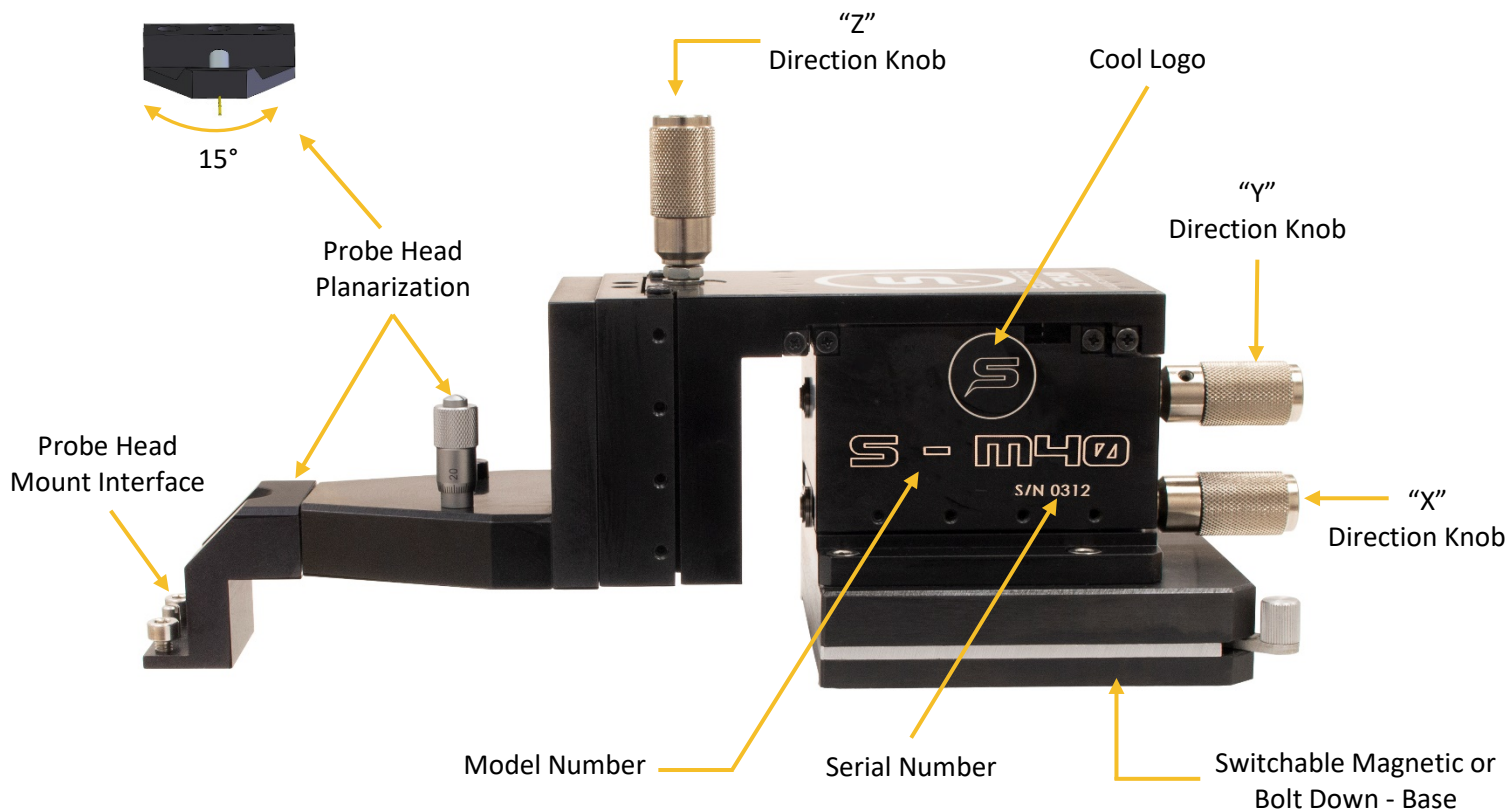
Model S-M40

Travel range	X-Y-Z = 25 mm
Planarization range	$\pm 7.5^\circ$ (0.1° resolution)
Feature resolution	2 μ m
Mounting	Switchable Magnetic or Bolt-down
Orientation	North-South/ East-West
Footprint	See Next Page

Application

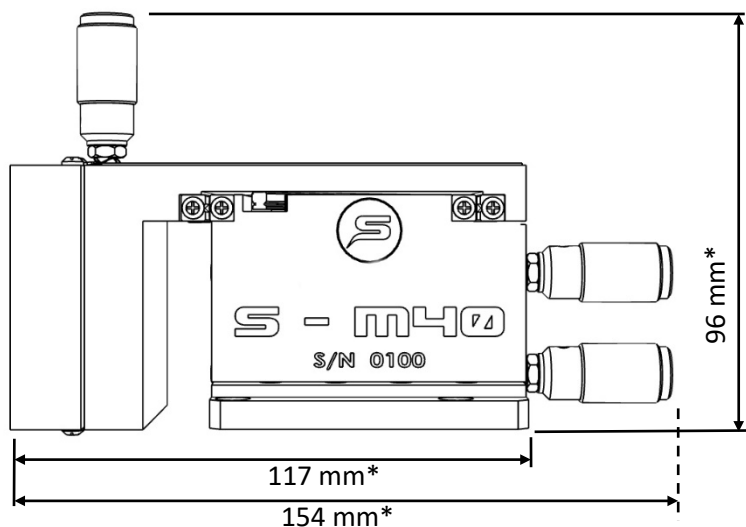
Stable base/ allows for accurate probing
RF DC to 110 GHz
Wedge cards
4-point probing
High-current probing

S-M40-MMEW

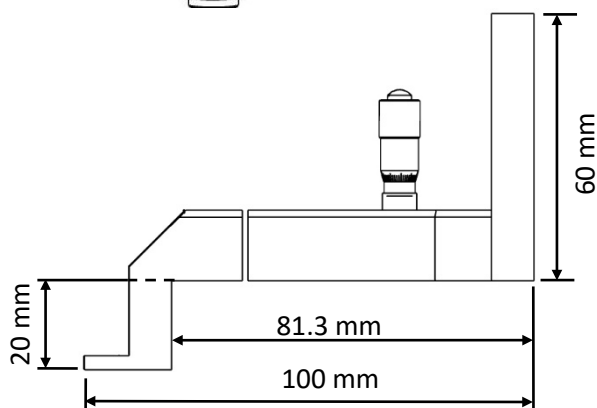


❖ **DIMENSIONS – S-M40 Body, Switchable Magnet Base, Bolt Down - Hard Mount**

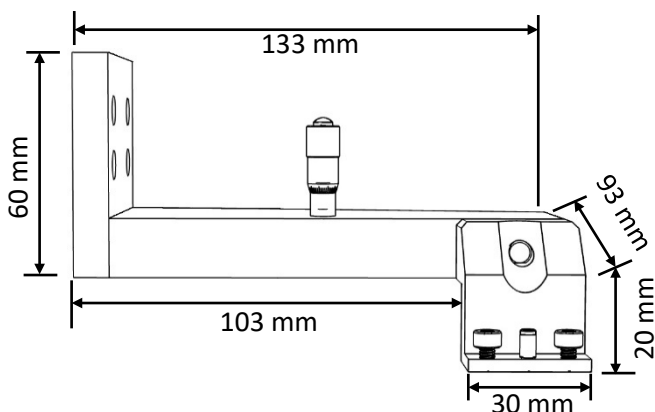
S-M40



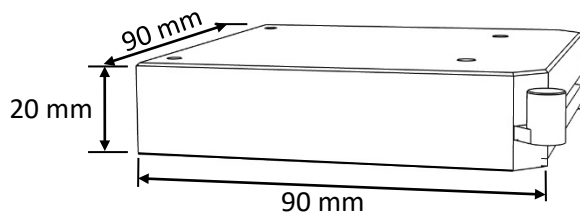
Note * = Center of Travel



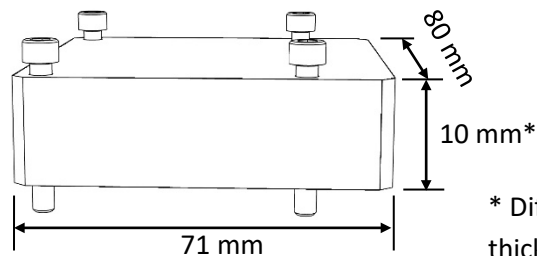
East-West Probe Arm



North - South Probe Arm



Switchable Magnet Base



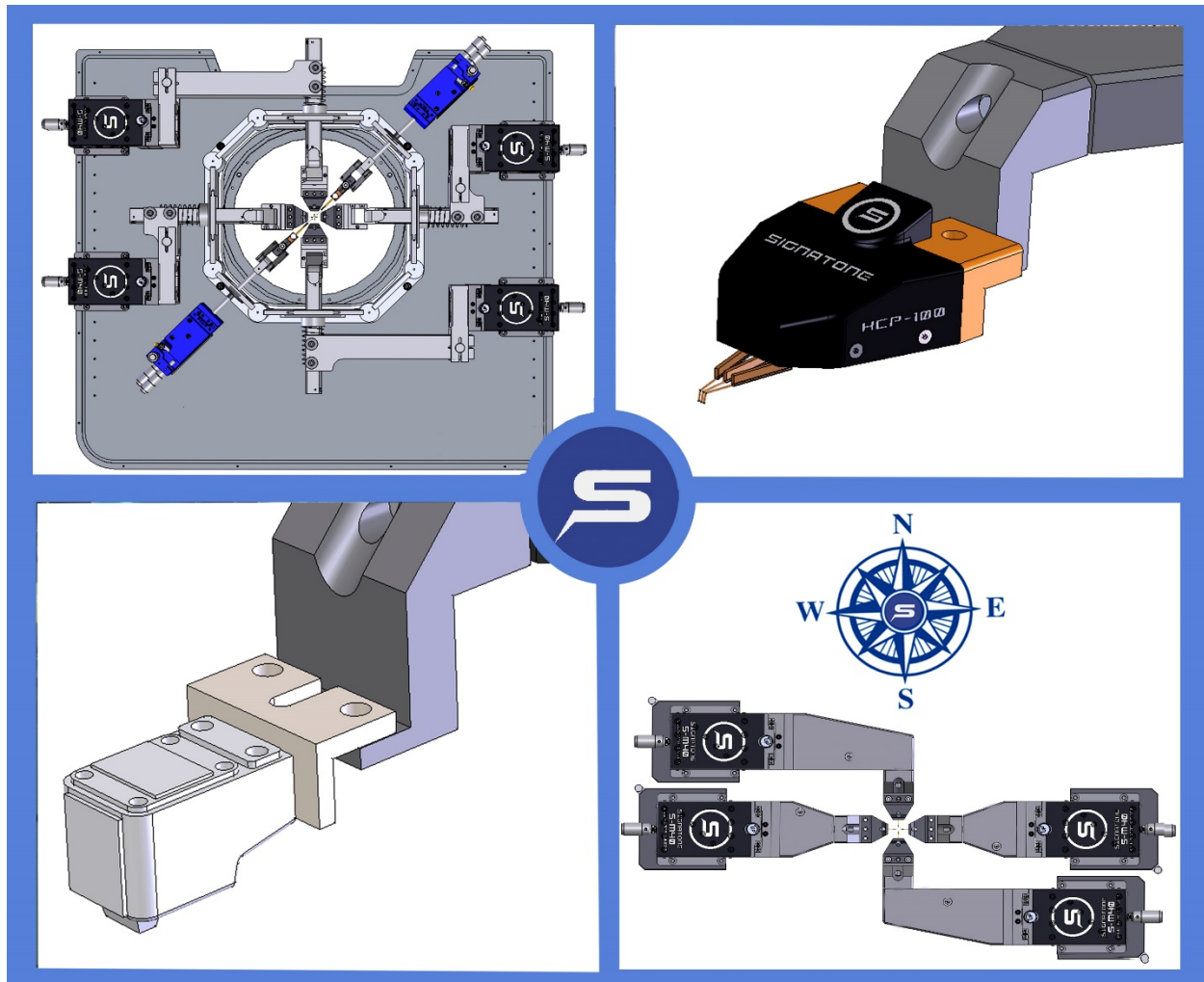
Hard Mount – Bolt Down Base

* Different thickness' available

❖ WARRANTY

- Standard Warranty 12 months *
- For Extended Warranty and Service Contracts contact Signatone Corp. for more information

* See Signatone Corporate Terms and Conditions of Sale for further details.



GRENOBLE - FRANCE

Tel : +33 (0)4 76 56 16 17

Email : contact@microworld.eu

www.microworld.eu